

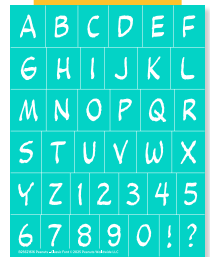
Holiday Fun!

Bring joy to every corner of your home—and to those you care about—by channeling the magic of the season with our festive Peanuts™ holiday collection!



PEANUTS - CHARLIE BROWN TREE
(4½" x 6½")

*** DELAYED ***



PEANUTS - CLASSIC FONT
(8½" x 11")



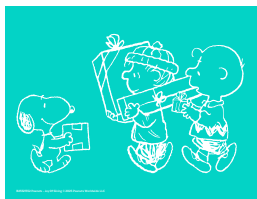
PEANUTS - CHRISTMAS TREE FARM
(12" x 18")



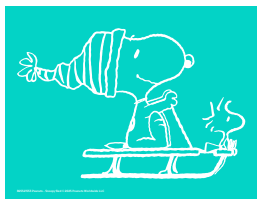
PEANUTS - DOCTOR LUCY
(8½" x 11")



PEANUTS - COZY SNOOPY
(6" x 18")



PEANUTS - JOY OF GIVING
(8½" x 11")



PEANUTS - SNOOPY SLED
(8½" x 11")



PEANUTS - SNOOPY'S HOLIDAY TREATS
(8½" x 11")



PEANUTS - PIANO PALS
(8½" x 11")



PEANUTS - WREATH
(18" x 18")

YOUR **chalkCOUTURE**™ INDEPENDENT DESIGNER:

Design. Love. Repeat.™

chalkcouture.com

@chalk_couture

/chalkcouture

/chalkcouture_

/chalkcouture

chalk
COUTURE

Tricks or Treats!

Enjoy autumn delights and spooky frights, featuring some of your favorite Peanuts™ characters. Get creative with nostalgic, festive flair this fall!



PEANUTS™



PEANUTS - MESSY PEOPLE (8 1/2" x 11")



PEANUTS - BE GIVING (6" x 18")



PEANUTS - HAPPY HALLOWEEN (9" x 9")



PEANUTS - GREAT PUMPKIN (4 1/2" x 6 1/2")



PEANUTS - BOO (4 1/2" x 6 1/2")



PEANUTS - FOOTBALL (8 1/2" x 11")



PEANUTS - SNOOPY SCARECROW (8 1/2" x 11")



PEANUTS - SPOOKY CREW (8 1/2" x 11")

YOUR chalkCOUTURE® INDEPENDENT DESIGNER:

Design. Love. Repeat.™

chalkcuture.com

@chalk_cuture

/chalkcuture

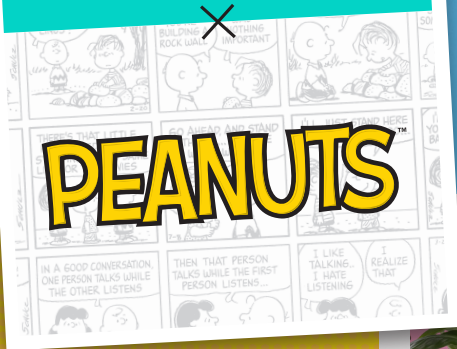
/chalkcuture_

/chalkcuture



Sweet!

From Independence Day to everyday, find inspiration to create nostalgic summer décor and more for the season and beyond in our latest collection of products in collaboration with Peanuts™.



PEANUTS - GROW HAPPINESS (8 1/2" x 11")



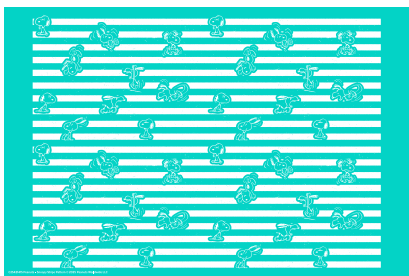
PEANUTS - ICE CREAM CONE (4 1/2" x 6 1/2")



PEANUTS - USA (8 1/2" x 11")



PEANUTS - SNOOPY (4 1/2" x 6 1/2")



SNOOPY STRIPE PATTERN (12" x 18")



PEANUTS - CHARLIE BROWN (8 1/2" x 11")

YOUR *chalk*COUTURE™ INDEPENDENT DESIGNER:

Design. Love. Repeat.™

chalkcouture.com

@chalk_couture

/chalkcouture

/chalkcouture_

/chalkcouture